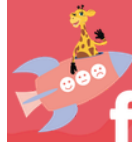


Harold's Friend Ship Booster Session 2 - Assessment Task



Harold's
friend ship.

Learning Intention:

Today we are: learning about managing big feelings.

So we can: better understand how to identify feelings and body clues, and ways to calm down.

I will know I have been successful: when I can create an invention that can help people to feel calm when they are feeling stressed, have big feelings, or are experiencing body clues.

--	--